

honesty

wrong

implications

compassion

grity

fairness

Ethical

Caring for an Aging Population:
Ethical challenges and solutions for patient choice

Pam Zimmerman, LSW, MA

1

Objectives

 Recognize **demographic projections** and the implications of the population shift on all sectors of society.

 Explore **our response** in caring for an aging population and initiatives to help people age well.


 Identify **ethical challenges** created by an aging population and **discuss solutions** to these presenting dilemmas.

 Explore issues of **patient choice** within the context of the Social Work Code of Ethics.

 Apply an ethical decision-making framework to **discuss** and **problem-solve** an ethical dilemma/case study.

2

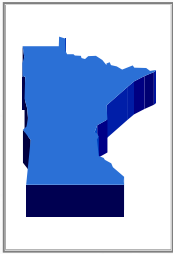
Demographic Projections



3



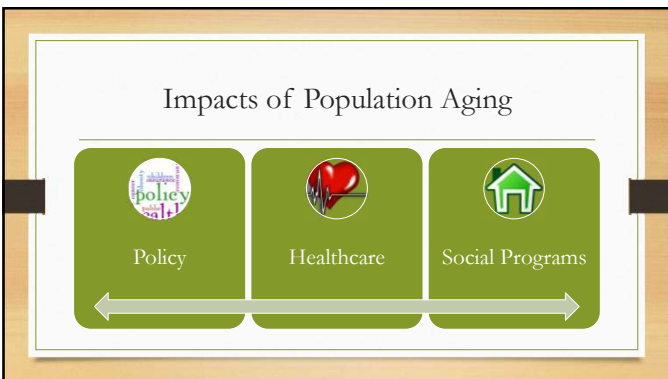
4



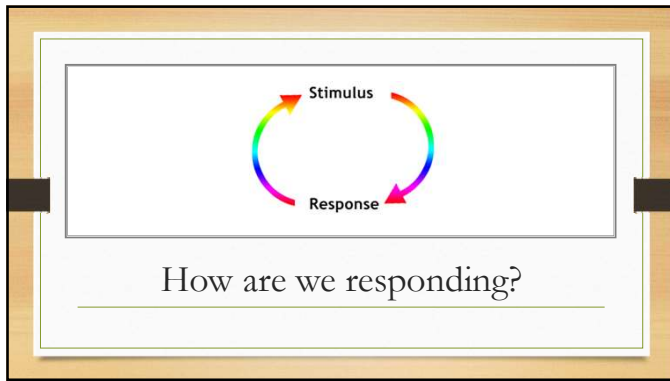
Population Shifts

Minnesota's **changing demographics**
65+ population will double – 2000 to 2030
85+ population will triple – 2000 to 2050
Life expectancy is also on the rise
73 years – men
79 years – women

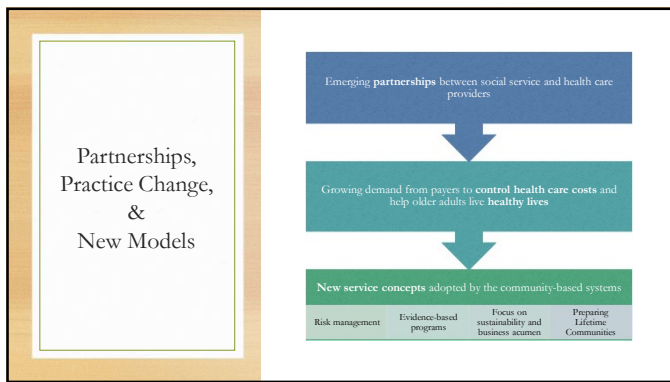
5



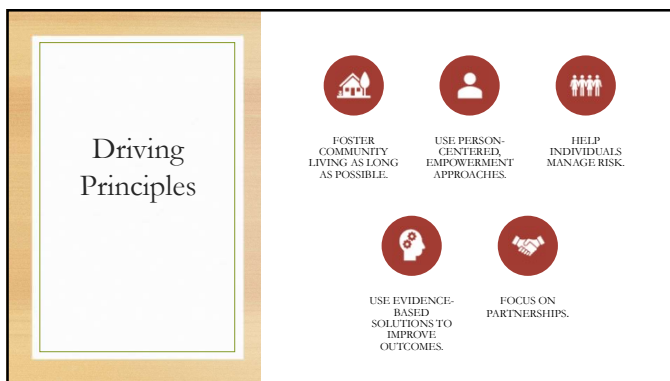
6



7



8




9

Ethical
Challenges
and
Solutions

*Challenges are what
make life interesting;
Overcoming them
is what makes
life meaningful.*

10

Ethical Challenge:
Health Care



11

Ethical Challenge: Family Caregiving

Daily living needs

- Dressing
- Bathing
- Feeding
- Finances
- Cooking
- Cleaning
- Shopping
- Transportation
- Companionship
- Care Coordination

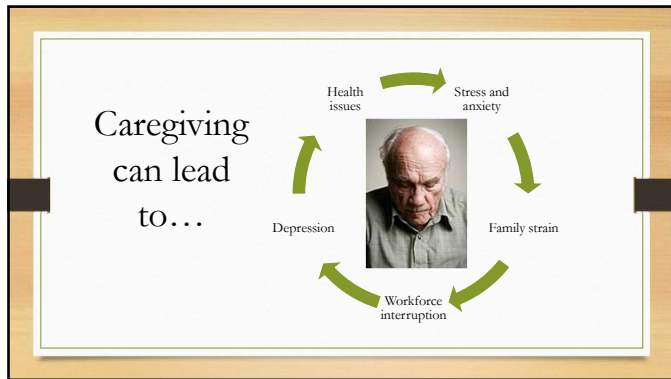
Decision making

- Medical
- Financial
- Insurance
- Legal
- Living arrangements
- Supportive services

Healthcare needs

- Medication management and administration
- Medical care
- Doctor visits
- Emotional support
- Supervision

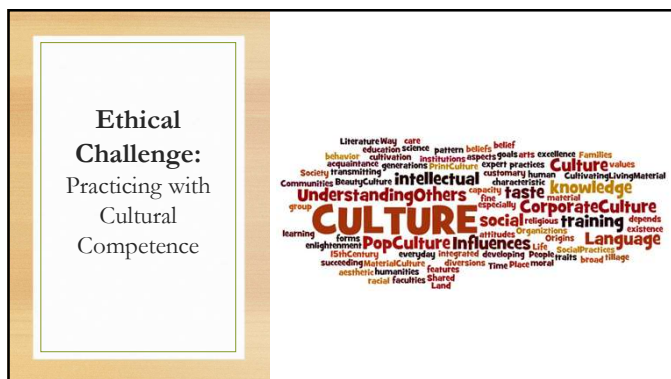
12



13

[illegible]

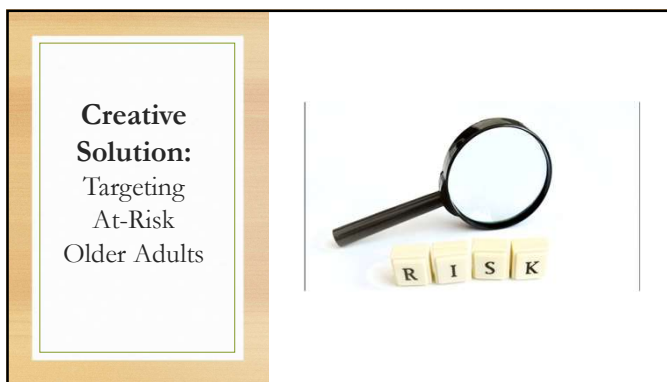
14

[illegible]

15



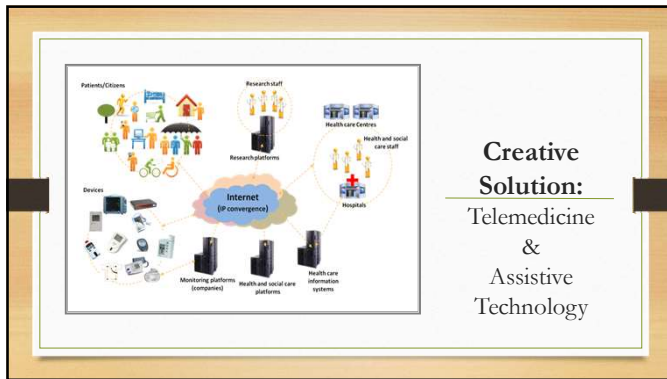
16



17



18



19

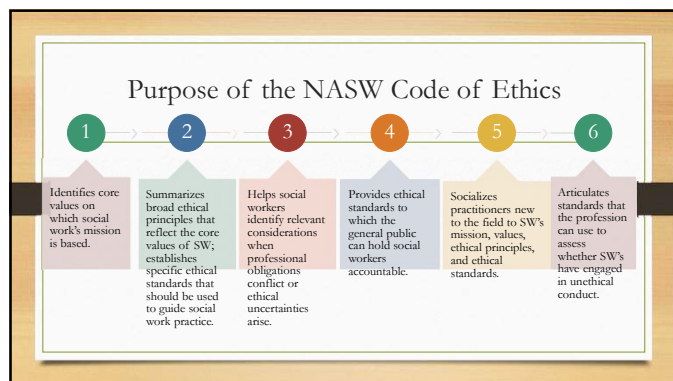
Creative Solution:
Promoting
Healthy Aging

20

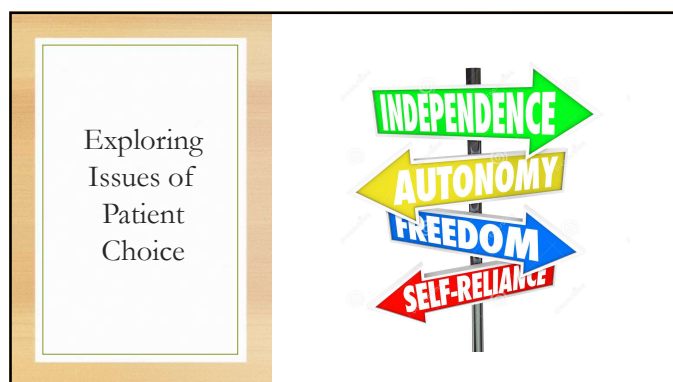
**NASW
Code of Ethics**

Source: https://www.socialworkers.org/About/Ethics/Code_of_Ethics

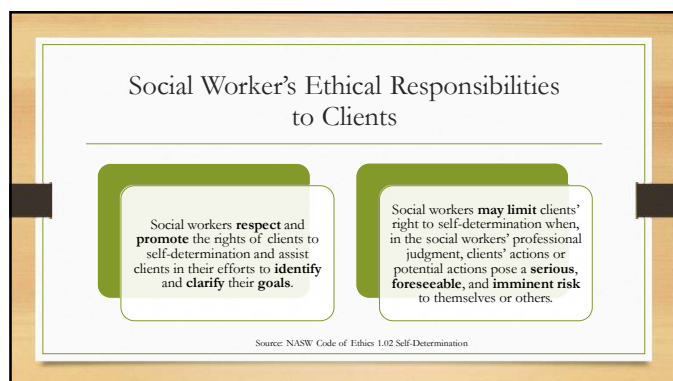
21



22




23




24

Social Workers' Ethical Responsibilities in Practice Settings



Social workers generally should adhere to commitments made to employers and employing organizations.




Social workers should work to improve employing agencies' policies and procedures and the efficiency and effectiveness of their services.


Source: NASW Code of Ethics 3.09 Commitments to Employers

25


Social Workers' Ethical Responsibilities in Practice Settings



Social workers should take reasonable steps to ensure that employers are aware of their ethical obligations as set forth in the NASW Code of Ethics and of the implications of those obligations for social work practice.



Social workers should not allow an employing organization's policies, procedures, regulations, or administrative orders to interfere with their ethical practice of social work.



Social workers should take reasonable steps to ensure that their employing organizations' practices are consistent with the NASW Code of Ethics.

Source: NASW Code of Ethics 3.09 Commitments to Employers

26

An Ethical Decision-Making Model

Corey et al., 1998

- Step 1: Identify problem.
- Step 2: Identify potential issues involved.
- Step 3: Review relevant ethical guidelines.
- Step 4: Know relevant laws and regulations.
- Step 5: Obtain consultation.
- Step 6: Consider possible & probable courses of action.
- Step 7: List consequences of these courses of action.
- Step 8: Decide on what appears to be the best course of action.

27



28



29
